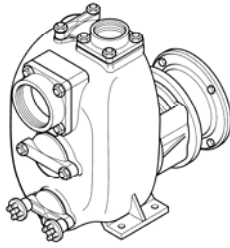
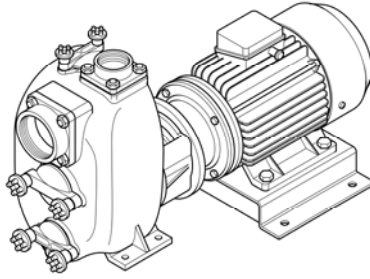


## DISTINTA DELLE PARTI COSTITUENTI LE POMPE CENTRIFUGHE AUTOADESCANTI SERIE " J "

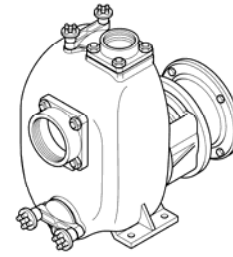
### SPARE PARTS LIST FOR "J" SERIES SELF-PRIMING PUMPS



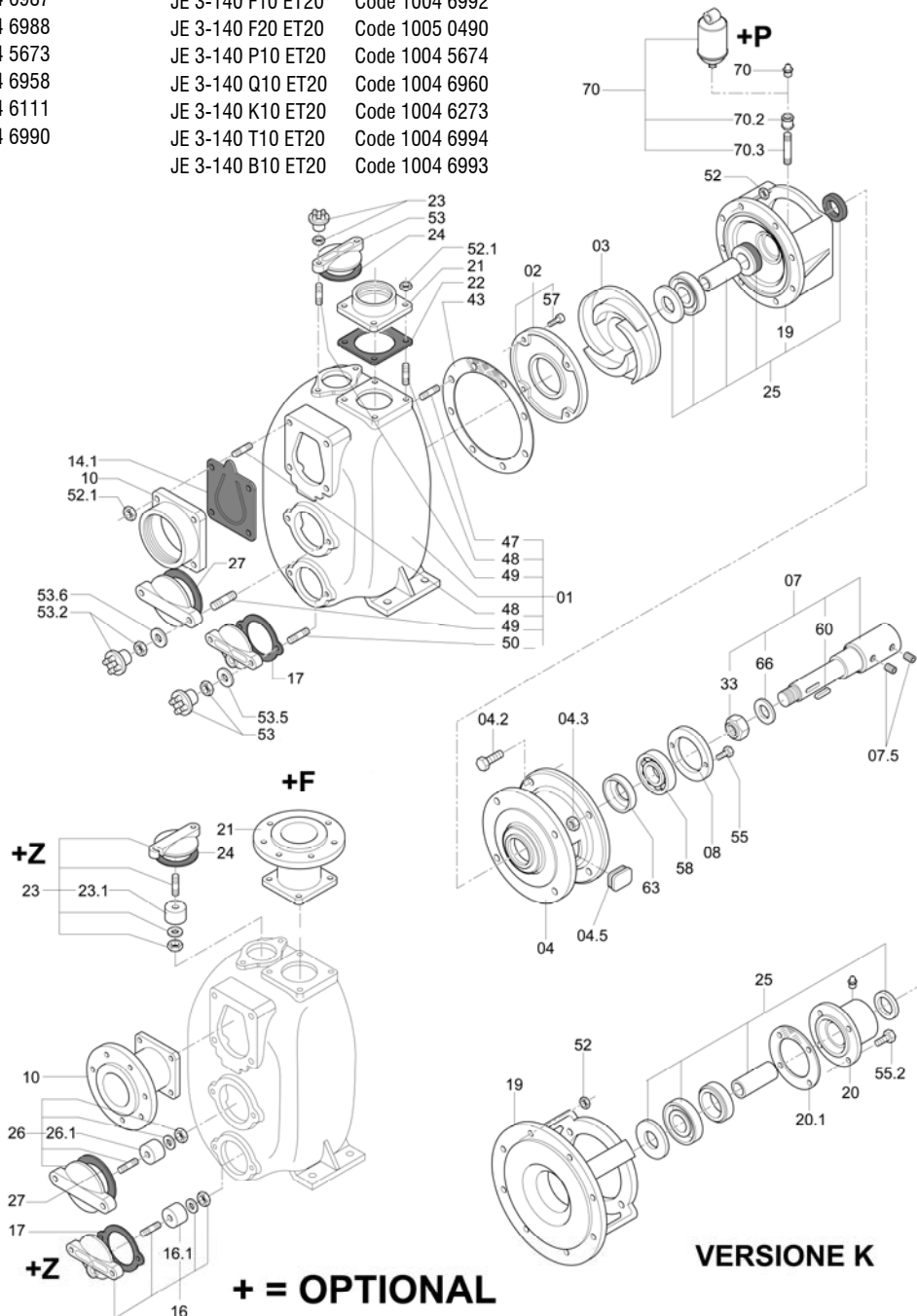
JP 3-140 G10 ETO      Code 1004 0879  
 JP 3-140 G11 ETO      Code 1004 6416  
 JP 3-140 F10 ETO      Code 1004 6987  
 JP 3-140 F20 ETO      Code 1004 6988  
 JP 3-140 P10 ETO      Code 1004 5673  
 JP 3-140 Q10 ETO      Code 1004 6958  
 JP 3-140 K10 ETO      Code 1004 6111  
 JP 3-140 T10 ETO      Code 1004 6990

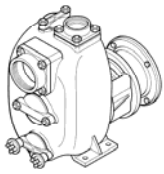


JE 3-140 G10 ET20      Code 1004 2933  
 JE 3-140 G11 ET20      Code 1004 6417  
 JE 3-140 F10 ET20      Code 1004 6992  
 JE 3-140 F20 ET20      Code 1005 0490  
 JE 3-140 P10 ET20      Code 1004 5674  
 JE 3-140 Q10 ET20      Code 1004 6960  
 JE 3-140 K10 ET20      Code 1004 6273  
 JE 3-140 T10 ET20      Code 1004 6994  
 JE 3-140 B10 ET20      Code 1004 6993

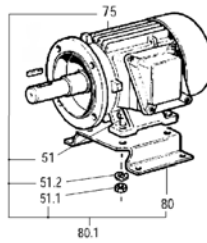


JP 3-140 B10 ET20      Code 1004 6989

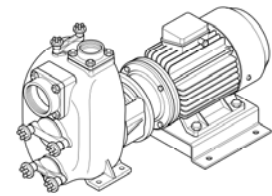




+



=



JP

+

MOTORE / MOTOR

=

JE

Rif. N° Pos. Nr.	Quant.	Denominazione	Part name	Den. Comm. Type	Mat. *	Codice Nuovo New Part. No.	JP 3-140 G10 ETO	JP 3-140 G11 ETO	JP 3-140 P10 ETO	JP 3-140 F10 ETO	JP 3-140 F20 ETO	JP 3-140 Q10 ETO	JP 3-140 B10 ETO	JP 3-140 K10 ETO	JP 3-140 K20 ETO	JP 3-140 T10 ETO	
01	1	Corpo (1)	Casing (1)		G	1001 8199	○	○	○								
					G	1004 7062			○	○							
					B	1002 1613						○					
					K	1003 0172										○	
					G+QPQ	1004 7063											
02	1	Piatto d' usura (2)	Wear plate (2)		GN	1000 8457	○										
					G	1000 8413		○	○								
					K	1000 8466				○	○			○	○		
					B	1000 8391								○	○		
					G+QPQ	1004 7064											
03	1	Girante	Impeller		G	1000 5337	○	○	○								
					K	1000 5413				○	○				○	○	
					B	1000 5227							○	○			
					G+QPQ	1002 8058											○
					G	1004 0680	○	○	○	○	○	○	○	○	○	○	○
04.2	2	Vite	Screw	M 8 x 35 DIN 933	S	1000 1940	○	○	○							○	
					S	1000 1938	○	○	○								○
					K	1000 2034				○	○	○	○	○	○	○	○
					K	1000 2029				○	○	○	○	○	○	○	○
04.3	2	Dado	Nut		S	1000 1420	○	○	○							○	
					K	1000 1435				○	○	○	○	○	○	○	
04.5	1	Tappo	Plug			1000 2908	○	○	○	○	○	○	○	○	○		
07	1	Albero (3)	Shaft (3)		S	1004 0876	○	○	○							○	
					K	1004 3184				○	○	○	○	○	○	○	
07.5	2	Vite	Screw	M 8 x 10 DIN 916	S	1004 8377	○	○	○	○	○	○	○	○	○	○	
08	1	Copricuscinetto	Bearing cover		G	1004 0750	○	○	○	○	○	○	○	○	○	○	
10	1	Portavalvola	Suction flange	R 3"	G	1000 6422	○	○	○	○	○					○	
					OTS	1000 6399								○	○		
					K	1000 6455										○	○
							<b>+F</b>	<b>+F</b>	<b>+F</b>	<b>+F</b>	<b>+F</b>	<b>+F</b>	<b>+F</b>	<b>+F</b>	<b>+F</b>	<b>+F</b>	
14.1	1	Valvola completa (4)	Check valve ass. (4)		NK	1000 9019	○	○					○			○	
					TK	1000 9021					○					○	
					VK	1000 9022				○	○					○	
16	1	Portina	Cover		S	1000 6473	○	○	○	○							
					G	1000 6486					○						
					OTS	1000 3749									○		
					KL	1000 6502										○	○
					SZ	1000 8502	<b>+Z</b>	<b>+Z</b>	<b>+Z</b>					○			
16.1	1	Placca zinco	Zinc anode				<b>+Z</b>	<b>+Z</b>	<b>+Z</b>						<b>+Z</b>		
17 (**)	2	Guarnizione	Gasket														
19	1	Portamotore	Head		G	1000 6342	○		○	○		○					
					G	1000 6343											
					G	1001 7540		○			○						
					K	1000 6371									○	○	
					B	1000 6287										○	
					G+QPQ	1002 3624											

VARISCO S.p.A.

35129 Padova - Z.I. Nord Terza Strada, 9

Tel. 049 82 94 111

Fax 049 82 94 373

+39 049 82 94 111  
International +39 049 80 76 762



**HEMPEL**  
AntriebsTechnik

+49 (2154) 4989-37 - pumpe@hem-net.de

**varisco**  
solid pumping solutions

Rif. N° Pos. Nr.	Quant.	Denominazione	Part name	Den. Comm. Type	Mat. *	Codice Nuovo New Part. No.	JP 3-140 G10 ETO	JP 3-140 G11 ETO	JP 3-140 P10 ETO	JP 3-140 F10 ETO	JP 3-140 F20 ETO	JP 3-140 Q10 ETO	JP 3-140 B10 ETO	JP 3-140 K10 ETO	JP 3-140 K20 ETO	JP 3-140 T10 ETO	
20	1	Portatenuta	Seal box		K	1000 6252											
20.1	1	Guarnizione	Gasket		E3	1000 5637											
21	1	Flangia mandata	Discharge flange	R 3"	G	1000 5090	○	○	○	○	○					○	
					OTS	1000 5070							○	○			
					K	1000 5113									○	○	
							+F	+F	+F	+F	+F	+F	+F	+F	+F	+F	
22 (**)	1	Guarnizione	Gasket														
23	1	Portina	Cover		S	1000 6473	○	○	○	○							
					G	1000 6486					○						
					OTS	1000 3748								○			
					KL	1000 6502									○	○	
					SZ	1000 8502								○			
							+Z	+Z	+Z							+Z	
23.1	1	Placca zinco	Zinc anode				+Z	+Z	+Z							+Z	
24 (**)	1	Guarnizione	Gasket														
25	1	Anello di tenuta	Mechanical seal ass.	T 30 YYN		1000 8898	○	○					○				
				T 30 YYT		1004 6652						○				○	
				T 30 YYV		1000 8899				○	○		○			○	
26	1	Portina	Cover		G	1000 6474	○	○	○	○	○						
					K	1000 6503									○	○	
					GZ	1000 8503								○			
							+Z	+Z	+Z							+Z	
26.1	1	Placca zinco	Zinc anode				+Z	+Z	+Z							+Z	
27 (**)	1	Guarnizione	Gasket														
33	1	Dado girante	Impeller nut	M 18 x 1,5 UNI 7474	H	1000 1464	○	○	○								
				M 18 x 1,5 UNI 7474	K	1000 1471						○	○	○	○	○	
34	1	Anello spartiacque	Water deflector	65x25,3x2	H	1000 4139		○	○	○		○					
43 (**)	1	Guarnizione corpo	Casing gasket														
45	4	Vite	Screw	M 8 x 25 DIN 933	S	1000 1938	○	○	○								
				M 8 x 25 DIN 933	K	1000 2034						○	○	○	○	○	
45.1	4	Dado	Nut	M 8 DIN 934	S	1000 1420	○	○	○								
					K	1000 1434						○	○	○	○	○	
47 (*)	8	Prigioniero	Stud	M 8x20 DIN 938	S		○	○	○								
				M 8x18 DIN 938	K						○	○	○	○	○		
48 (*)	8	Prigioniero	Stud	M 10x20 DIN 938	S		○	○	○								
				M 10x25 DIN 938	K						○	○	○	○	○		
49 (*)	4	Prigioniero	Stud	M 10x30 DIN 938	S		○	○	○								
				M 10x35 DIN 938	K							○					
				M 10x30 DIN 938	K							○	○	○	○		
51	4	Vite	Screw	M 10 x 30 DIN 933	S	1000 1949	○	○	○	○	○	○	○	○	○	○	
51.1	4	Dado	Nut	M 10 DIN 934	S	1000 1421	○	○	○	○	○	○	○	○	○	○	
51.2	4	Rondella	Washer	M 10 DIN 125 A	S	1000 1691	○	○	○	○	○	○	○	○	○	○	
52 (*)	8	Dado	Nut	M 8 DIN 934	S		○	○	○								
					H						○	○	○	○	○		
52.1(*)	8	Dado	Nut	M 10 DIN 934	S		○	○	○								
					H								○	○	○	○	
53 (*)	4	Dado	Nut	M 10 DIN 934	S		○	○	○								
					K								○	○	○	○	
53.2(*)	2	Dado	Nut	M 10 DIN 934	S		○	○	○								
					K								○	○	○	○	
53.5(*)	2	Rondella	Washer	M 10 DIN 125 A	OTS		+M	+M	+M			○				+M	
53.6(*)	2	Rondella	Washer	M 10 DIN 125 A	S		○	○	○								
					K								○	○		○	○
54 (*)	2	Prigioniero	Stud	M 10x30 DIN 938	S		○	○	○								
				M 10x35 DIN 938	K									○			
				M 10x30 DIN 938	K							○					



Rif. N° Pos. Nr.	Quant.	Denominazione	Part name	Den. Comm. Type	Mat. *	Codice Nuovo New Part. No.	JP 3-140 G10 ET0	JP 3-140 G11 ET0	JP 3-140 P10 ET0	JP 3-140 F10 ET0	JP 3-140 F20 ET0	JP 3-140 Q10 ET0	JP 3-140 B10 ET0	JP 3-140 K10 ET0	JP 3-140 K20 ET0	JP 3-140 T10 ET0
							○	○	○	○	○	○	○	○	○	○
55	2	Vite	Screw	M 6x16 DIN 933	S	1000 1932	○	○	○	○	○	○	○			○
55.2	4	Vite	Screw	M 8x35 DIN 931		1000 2033								○	○	
57 (*)	3	Vite	Screw	M 8x16 DIN 912	H K		○	○	○							○
58	1	Cuscinetto	Ball bearing	6206-2RS C3		1004 0831	○	○	○	○	○	○	○	○	○	○
60	1	Linguetta	Key	8 x 7 x 20 DIN 6885A	K	1000 1621	○	○	○	○	○	○	○	○	○	○
63	1	Ghiera	Sleeve			1004 0751	○	○	○	○	○	○	○	○	○	○
66	1	Rondella	Washer	M 18 DIN 125 A	H K	1000 1712 1000 1711	○	○	○							○
70	1	Ingrassatore	Grease nipple	R 1/4"		1000 1662 1000 8316	○	○	○	○	○	○	○	○	○	○
70.1	1	Manicotto	Union	R 1/4" M/F	S		+P	+P	+P	+P	+P	+P	+P	+P	+P	+P
70.2	1	Prolunga	Grease tube	1/4"	S		+P	+P	+P	+P	+P	+P	+P	+P	+P	+P
75	1	Motore V.230/400(3PH)	AC motor V.230/400(3PH)			1004 1934	○	○	○	○	○	○	○	○	○	○
80	1	Piede motore	Motor base		S	1004 2044	○	○	○	○	○	○	○	○	○	○
80.1	1	Kit piede motore	Electric motor foot			1004 3172	○	○	○	○	○	○	○	○	○	○
(*)		Serie viterie	Set of screw			1001 4363 1001 4129 1001 4126 1001 4370 1001 4153	○	○	○							○
(**)		Serie guarnizioni	Set of gaskets			1001 4364 1001 4367 1001 4362 1001 4379 1002 7759 1001 4371 1001 4368	○	○	○							○
+F***		Kit flange	Kit flange	DN 80 PN16 DN 80 PN16 DN 80 PN16 3" ASA150 3" ASA150 3" ASA150	G B K G B K	1004 2810 1004 2806 1004 2791 1004 2819 1004 2823 1004 2827	○	○	○	○	○					○
+P***		Kit ingrassatore	Compl. Grease kit			1000 8316	○	○	○	○	○	○	○	○	○	○
+Z***		Kit portine	Set of couver		GZ	1001 4128	+Z	+Z	+Z							+Z
+M***		Kit manigliette	Set of wrench		OTS	1004 2794	+M	+M	+M							+M
***		Optional														

Note:	Notes:
1) Completo di prigionieri (47, 48, 49, 50).	1) Complete with studs (47, 48, 49,50).
2) Completo di viti (57).	2) Complete with screws (57).
3) Completo di dado, rondella e linguette (33, 60, 61, 66)	3) Complete with nut, washer and keys (33, 60, 61, 66)
4) Completo di valvola, contrappesi, vite e dado	4) Complete with check valve, weights, screw and nut
* Materiali di costruzione	* Construction materials
E3 Centellen VS 3820	E3 Centellen VS 3820
G Ghisa	G Cast iron
H Acciaio inox AISI 304	H AISI 304 stainless steel
K Acciaio inox AISI 316	K AISI 316 stainless steel
KL Acciaio inox AISI 316	KL AISI 316L stainless steel
OTS Ottone	OTS Brass
S Acciaio	S Steel
T Teflon	T Teflon
V Viton	V Viton
Ordinare il materiale indicando sempre la quantità, la denominazione, il codice del pezzo, il tipo e il numero della pompa.	When ordering spares always indicate: quantity, part name and part number, type and serial number of pump.

VARISCO S.p.A.

35129 Padova – Z.I. Nord Terza Strada, 9

Tel. 049 82 94 111

Fax 049 82 94 373

+39 049 82 94 111  
International +39 049 80 76 762



**HEMPEL**  
AntriebsTechnik

+49 (2154) 4989-37 - pumpe@hem-net.de

**varisco**  
solid pumping solutions